

MyPlaceMySay Beginners Guide



How to use the Locality Map

Created by:
Web Team

Email: webteam@sstaffs.gov.uk

How to use the Locality Map

If you wish to find your area using our Locality Map, you can do so. It is as easy as pressing a button!

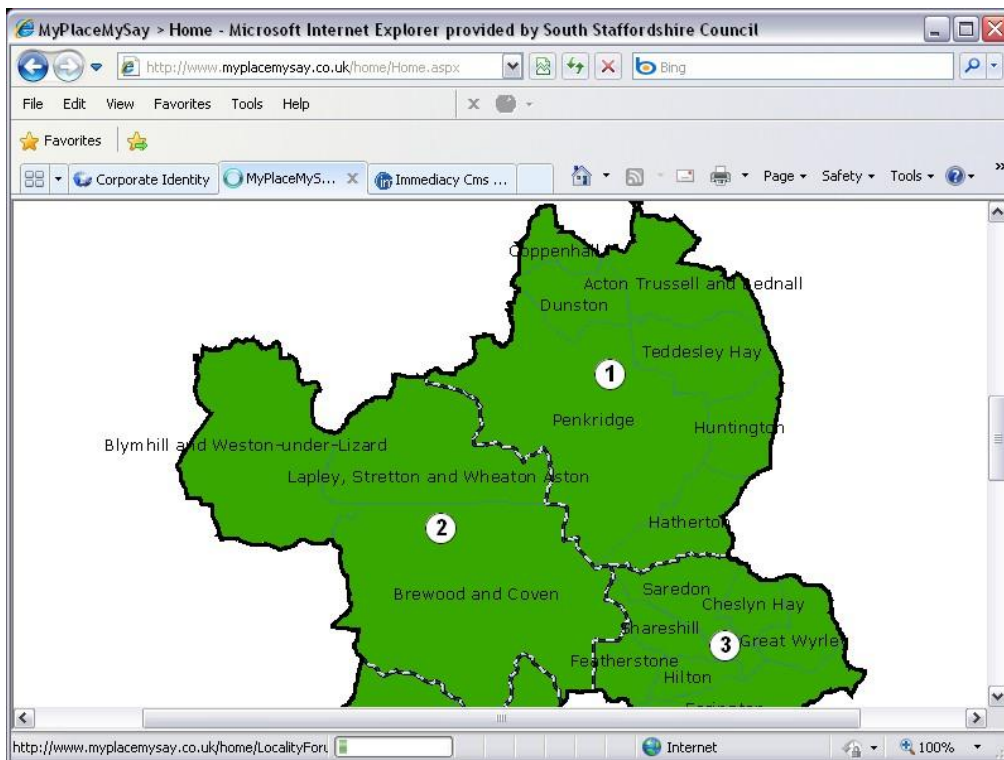
We have split the district up into 5 Localities, so there are 5 separate Locality Forums. Just click on your area and you will be taken to that Locality Forum.



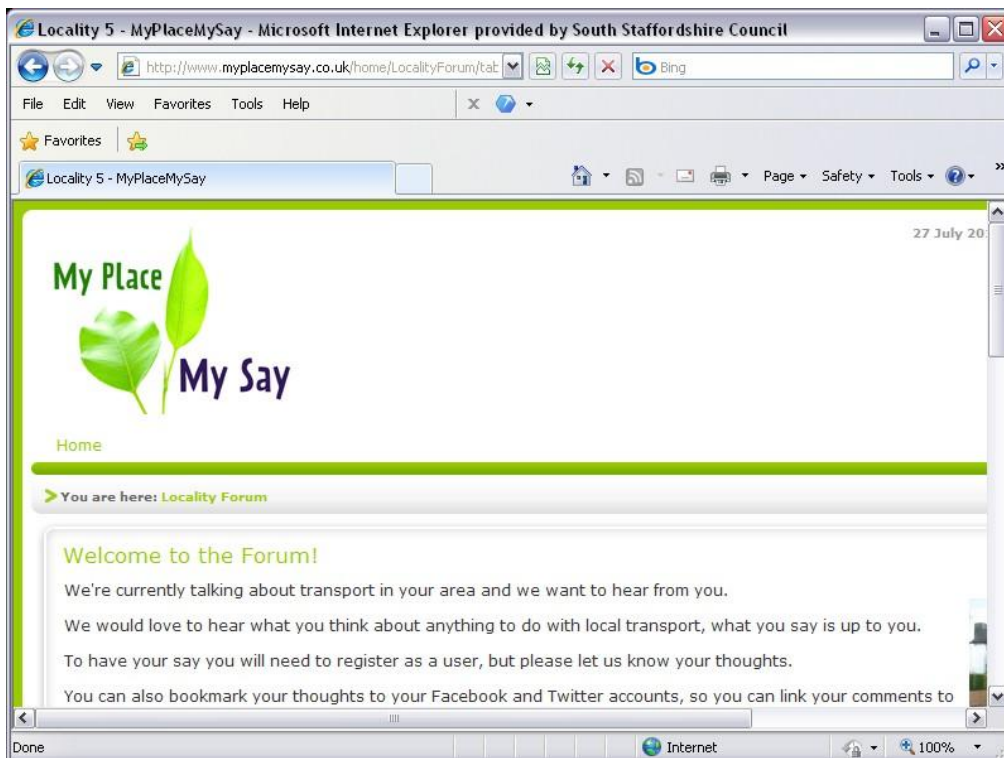
(Locality Map).

This is the Locality Map, it is displayed on the homepage of the website. All you need to do is find your village on the map and select it to enter your Localities Forum Page.

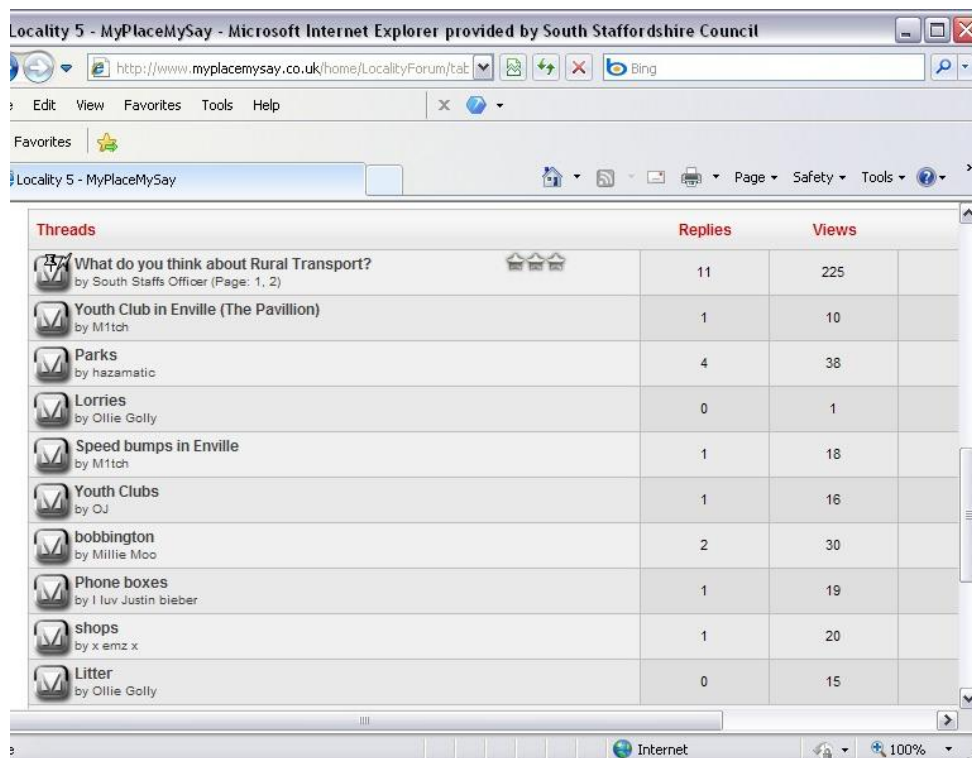
To do this you need to follow the steps below:



On the Homepage, scroll down to the Locality Map. Here you can click on the area that you live.



This will then open the **Locality Forum** page. Scroll down the page to view the Forum.



This is the Forum. All open Threads (topics of discussion) will be displayed here.

Trouble using Locality Map?

Here are some common problems when trying to use the Locality Map:

- Check your Locality! The Localities are numbered 1-5, so make sure the Forum you are in is the right one.
- If your area is not displayed on the map, try entering your postcode again (see help files).

If you need any more help or guidance with using our website, please contact us at:

Contact

Web Team

Tel: 01902 696140

Email: myplacemysay@sstaffs.gov.uk

Have you seen our Facebook page? Find us at www.facebook.com